

416

Washington Street





TriBeCa

Between Vestry & Laight Streets

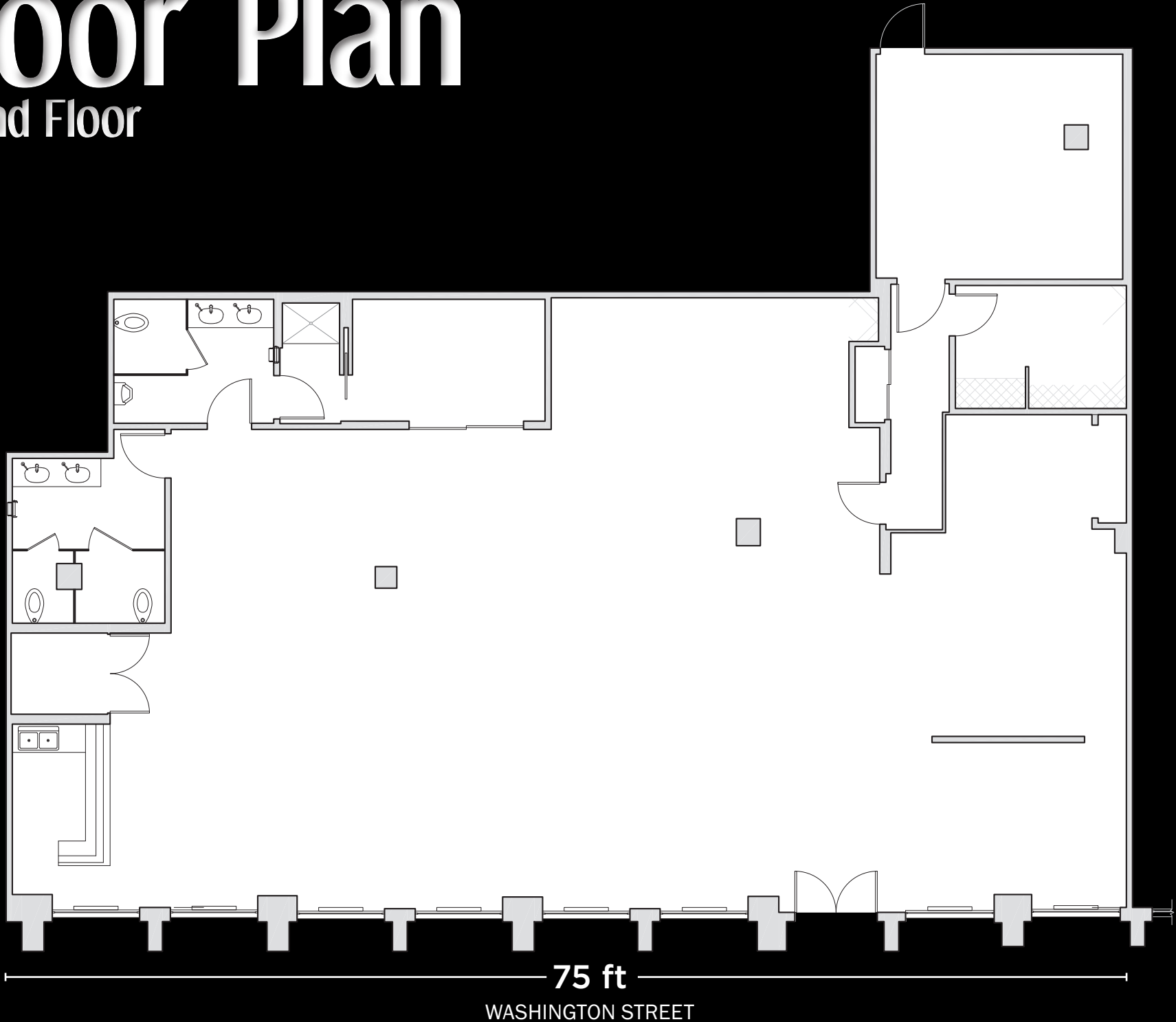
GROUND FLOOR: 3,575 sf
CEILING HEIGHT: 12 feet
POSSESSION: Immediate

DETAILS: Tenant Controlled HVAC,
Primarily Open Floorplan,
Walking Distance to the 1,
A, & C Trains

NEIGHBORING TENANTS: Yoga Vida, FlyWheel, Juice Press, City
Vineyard, Sweetgreen, Wolfgangs, Sushi Azabu, John Allen

Floor Plan

Ground Floor



FOR FURTHER INFORMATION, PLEASE CONTACT OUR EXCLUSIVE AGENTS:

BENJAMIN BIRNBAUM

212.850.5474

bbirnbaum@ngkf.com

ALEXANDRA TENNENBAUM

212.850.5437

atennenbaum@ngkf.com

ANDREW TAUB

212.372.2011

andrew.taub@ngkf.com



www.ngkf.com/retail

